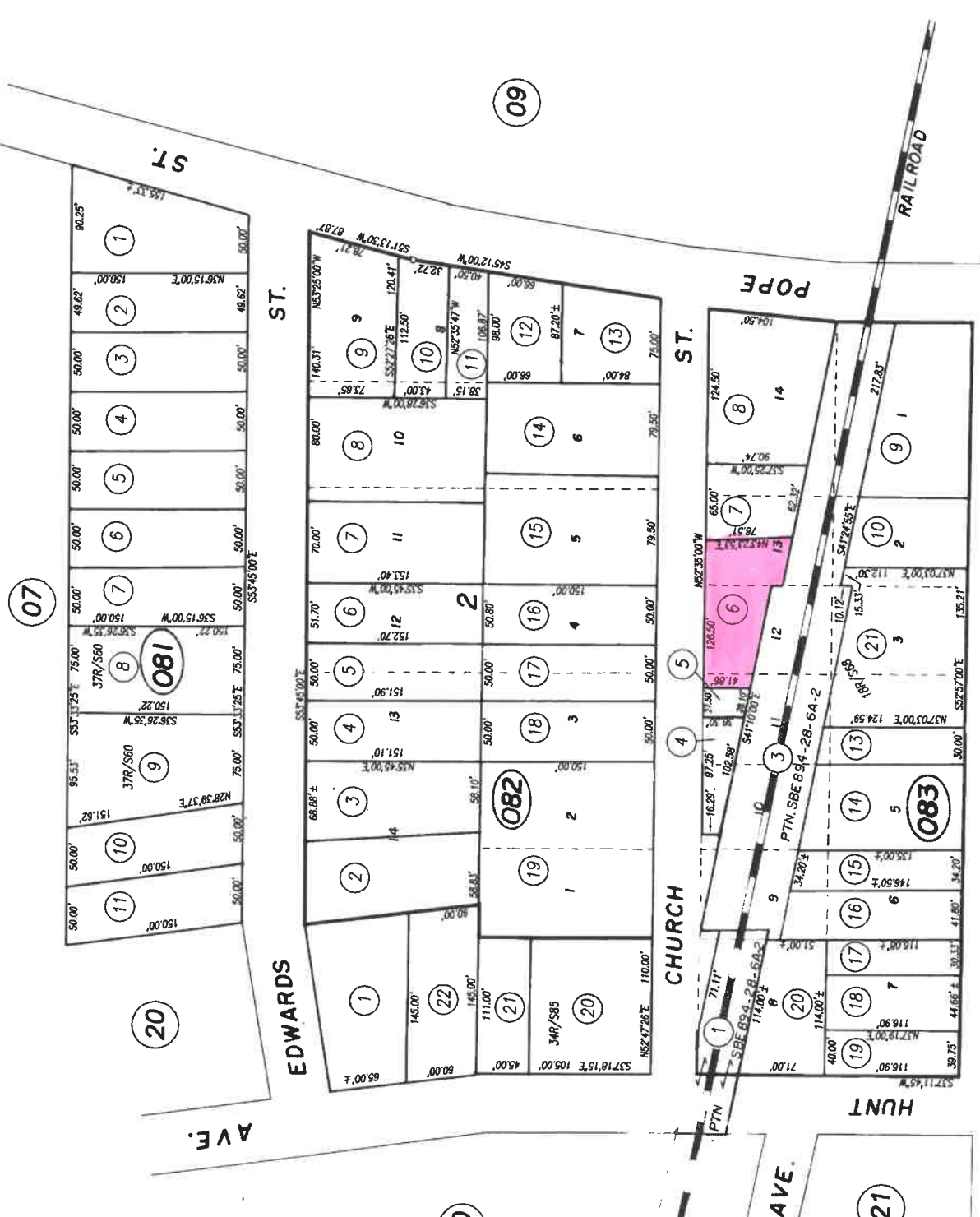


POR. RANCHO CARNE HUMANA
R. M. Bk. D of Patents, Pg. 127

Tax Area Code
3002



9-28-78	REVISION	DATE
10-26-89		
082-20 RS		
4-17-02		
081-08 & 09 RS		
2-1-06		

CITY OF ST. HELENA
Assessor's Map Bk. 9 -Pg
County of Napa, Calif
1954-60-e1

This Map Was Prepared For
Int Purposes Only, No
s Assumed For The
Of The Data Delineated

STATE HWYS 128 & 29

Edward's Add'n., R.M. Bk. Pg. 25
Spring ST. 26
Edwards Add'n., R.M. Bk. Pg. 24